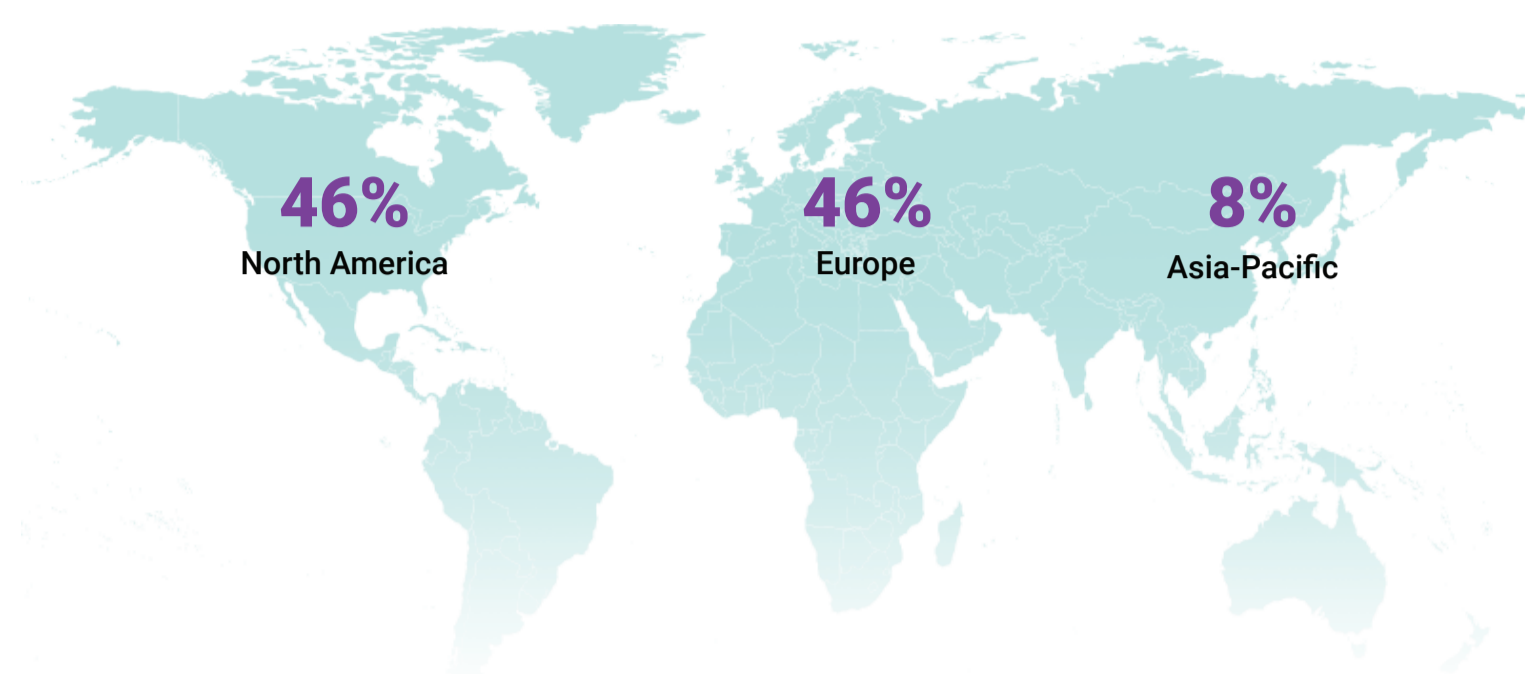


Meeting Critical Investment Milestones

Opportunities & Challenges For Biotech

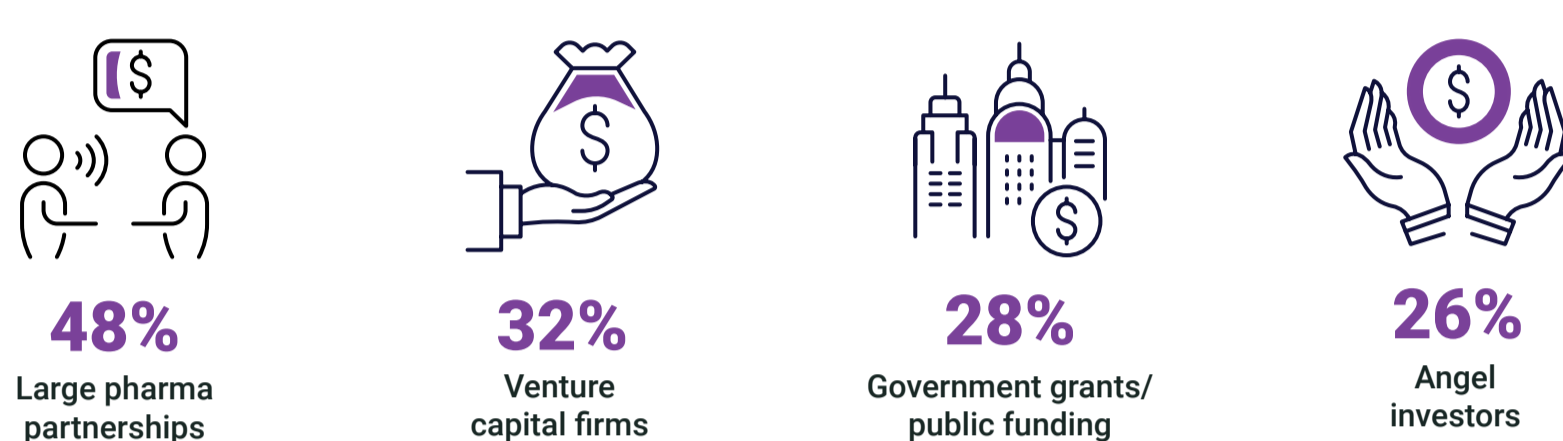
Biotech companies are the source of key innovation in life sciences, offering hope to many patients in need of treatment. Sustained financing to support them along the development path is required to meet this potential, and hitting investment milestones is a critical factor. After a challenging period for biotech funding, Citeline and ICON surveyed decision-makers in the space to understand their perceptions on the current environment, development challenges and future strategies.

Survey participants were based in biotech companies across the globe:



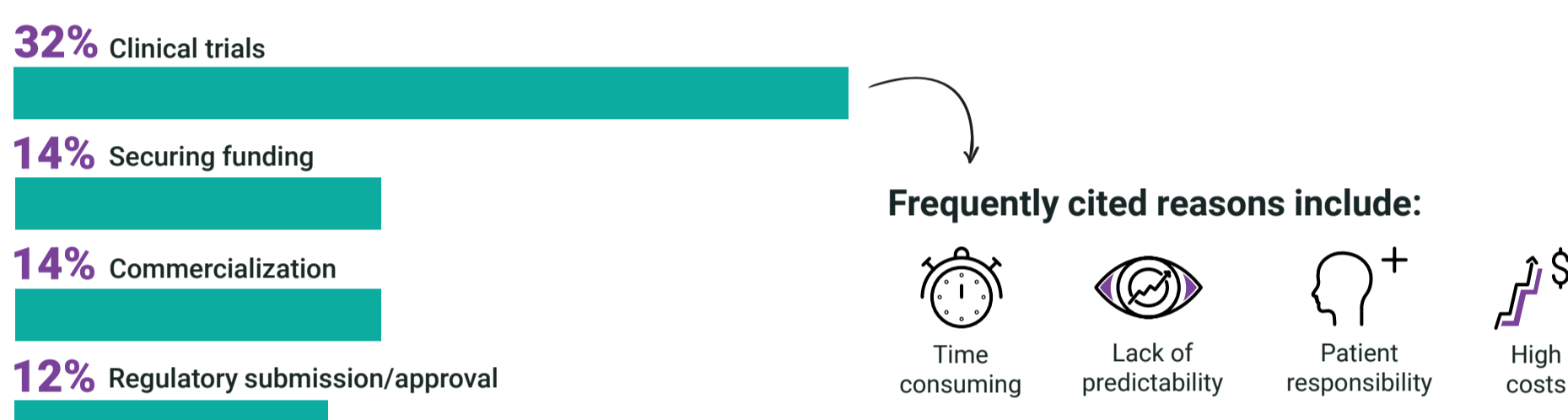
Where Is Funding Coming From?

Almost half of biotech funding comes from large pharma partnerships.

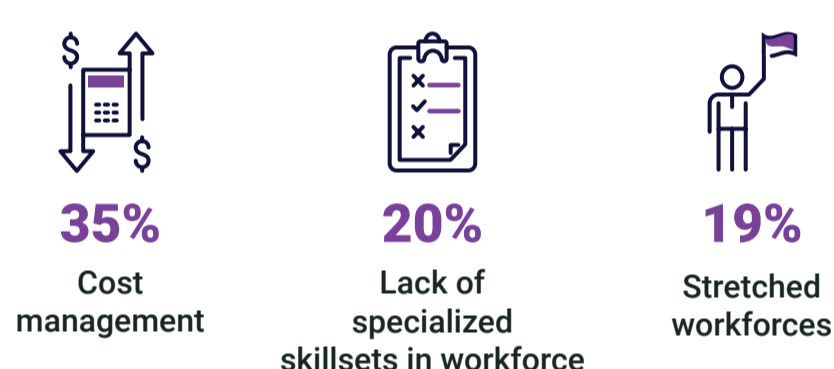


What Stands In Biotech's Way?

Clinical trials are by far the most challenging stage of development:



Most Significant Barriers to Innovation

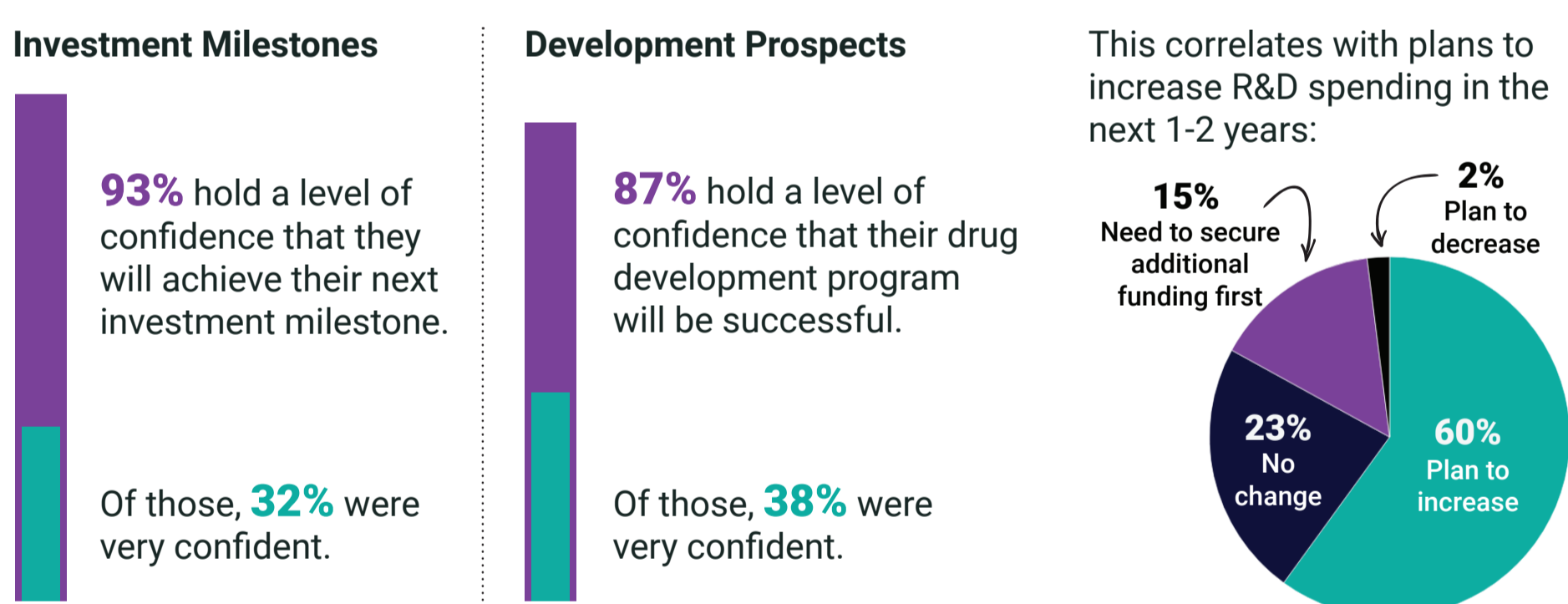


Top Micro Factors Posing Risk to Biotech Operations



Optimism Prevails In Face Of Challenges

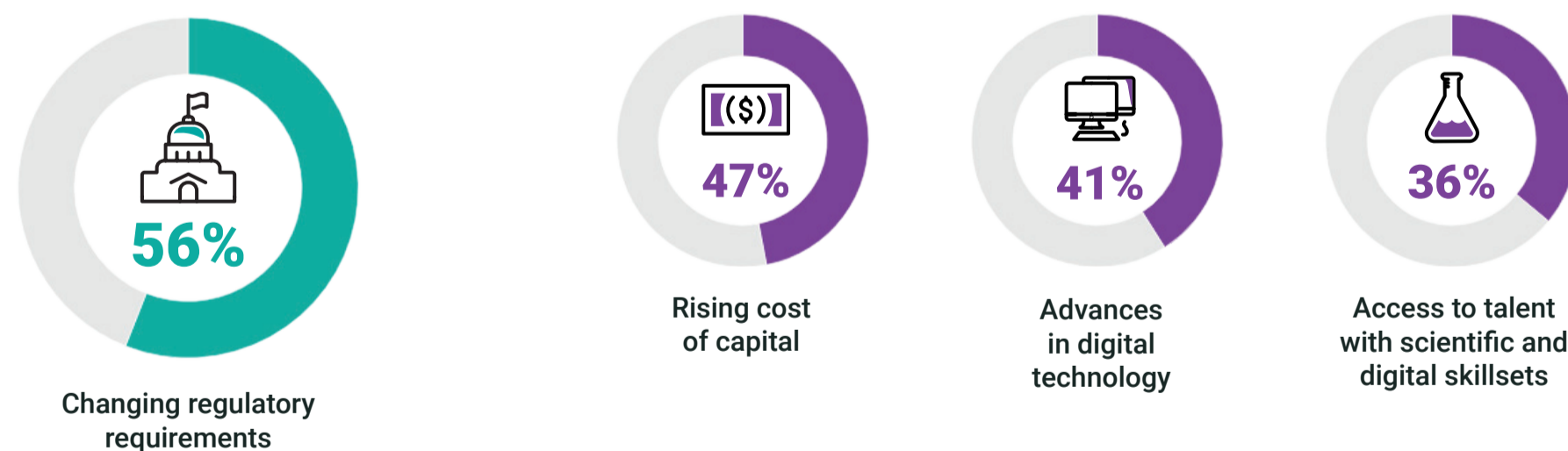
While managing costs, securing funding and navigating complex development processes can be challenging, overall biotech companies remain optimistic.



Future Operational Influences

The biggest macro impact on their organization is **changing regulatory requirements**.

The other factors that will have a major influence on future biotech operations are:



This infographic is brought to you by:



ICON plc is a world-leading healthcare intelligence and clinical research organisation. From molecule to medicine, we advance clinical research providing outsourced services to pharmaceutical, biotechnology, medical forward and government and public health organisations. We develop new innovations, drive emerging therapies and improve patient lives. With headquarters in Dublin, Ireland, ICON employed approximately 41,150 employees in 109 locations in 53 countries as of March 31, 2023.

For further information about ICON, visit: www.iconplc.com.



Pharma Ignite brings you the most up-to-date and informed intelligence in the industry. Our network of industry-leading analysts and partners is pursuing new intelligence in the core areas of life sciences using Citeline's suite of insights products and services – all of which has the power to fuel your organization and projects.

We also provide cutting-edge lead generation and brand programs to help you reach and collaborate with audiences across industry events and digital platforms.



Citeline (a Norstella Company) powers a full suite of complementary business intelligence offerings to meet the evolving needs of health science professionals to accelerate the connection of treatments to patients and patients to treatments. These patient-focused solutions and services deliver and analyze data used to drive clinical, commercial, and regulatory related decisions and create real-world opportunities for growth.

Our global teams of analysts, journalists and consultants keep their fingers on the pulse of the pharmaceutical, biomedical and medtech industries, covering it all with expert insights: key diseases, clinical trials, drug R&D and approvals, market forecasts and more.

Source: Survey results from 'Meeting Biotech Potential: Challenges & Opportunities' conducted by Citeline and ICON plc in May 2023.